

Supporting Local Services and Non-motorised transport (NMT) along the A1307 East of Linton – March 2021

Current Issues – the A1307 corridor bisects the villages east of Linton. It includes the 13 bus route and access to the west to Cambridge and east to Haverhill. Despite plans to reduce the speed limit to 50mph, walking or using NMT to cross the A1307 is hazardous. The bus stops on the A1307 at Alington Terrace, Cardinals Green, are in the 50mph carriageway in both directions, slowing traffic and causing a hazard to vehicles and pedestrians. The 13 service can stop in the centre of Horseheath and at Alington Terrace every 30 minutes in peak times. There is no parking for bicycles or safe access to bus stops along the route; a fatality and serious accident has occurred at the bus stops at Alington Terrace. Current arrangements actively discourage motorised and public transport and slow traffic on the A1307.

Linton is a minor rural centre with a full range of services. There are no protections for NMT along the narrow side roads or along the A1307 and no direct footpaths. Diagrams 1a and 1b show the current local footpaths and bridleways and the accidents along the roads in the area. Access to services is poor for NMT. The laybys in Horseheath (diagram 2) tend to be used as overnight lorry parks with litter and use of the adjoining footpaths as open toilets by drivers.

Despite the need, there are no safe crossing points; currently five crossings are used by NMT; (a) bridleway 146/7 from Little Linton to Camgrain; (b) the junction of footpaths 146/7 to footpath 146/13; (c) the Dean road crossing for cyclists; (d) the Harcamlow way and (e) Howards Lane at Cardinals Green.

Suggestions to improve road safety, encourage NMT use and improve traffic flow on the A1307 east of Linton

1. **All bus stops should have covered bicycle/other transport storage;** buses should additionally facilitate carrying NMT
2. **The Alington Terrace bus stops should be moved to the laybys 300m west.** See diagrams 2 & 3. This would take them out of the carriageway, improving traffic flow and allowing safe waiting. A tarmac path already exists between the footpaths crossing the A1307 on the south side of the road. This proposal would require new tarmac paths on either side (there is space) to connect Haverhill Road, Horseheath and Alington Terrace, Cardinals Green, to the new bus stops. It is anticipated that this would increase access to these stops on both sides of the road. While ideally a signalised crossing would be installed, a new traffic island and marked crossing at this point would also have greater visibility than the current position of the bus stops and be further away from road junctions. No overnight lorry parking would be permitted in these laybys.
3. **Designation of feeding minor roads as Quiet Routes.** Diagram 4 shows minor roads which could be specifically designated as Quiet Routes, with appropriate warning signs for motorised transportⁱ. While this would not remove hazards, it would increase NMT users confidence and support access to bus and other services.
4. **Modification of footpaths to provide more consistent routes.** In conjunction with the British Horse Society County Access and Bridleway Officer we suggest that there should be some re-location of footpaths and bridleways to facilitate transport over this network. An upgrade of footpath 146/26 to bridleway status would give access to Bridleway 146/25 and onward to the Roman Road and beyond. See diagrams 5 (a) and 5 (b).

These proposed measures are simple ways to support NMT in the area. **However exclusive NMT routes and at least one crossing point suitable for walkers, cyclists and equestrians across the A1307 east of Linton are required to reduce use of motorised transport in the area.**

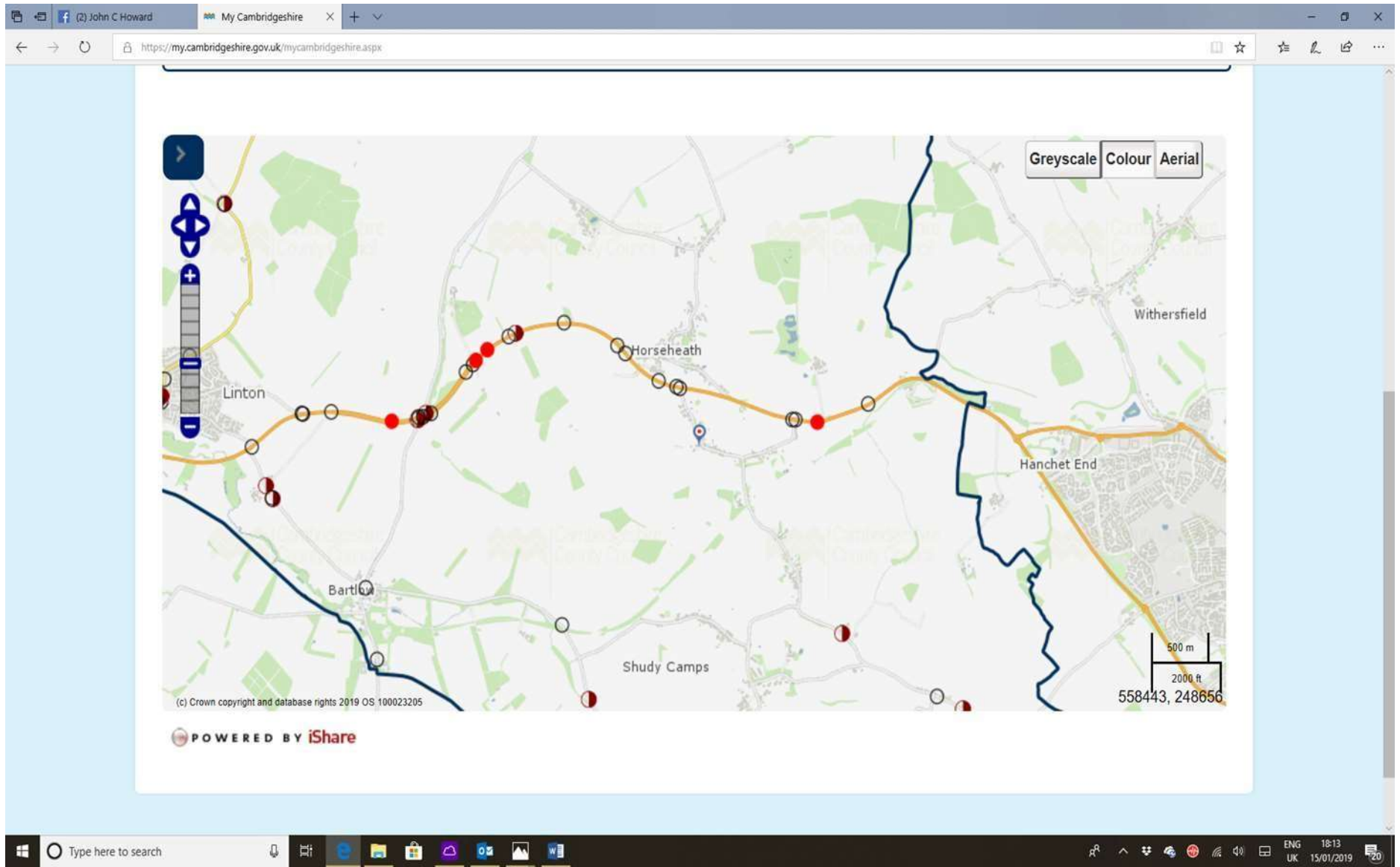


Diagram 1a- Accidents along the A1307 and minor roads (accessed 30th January 2021)

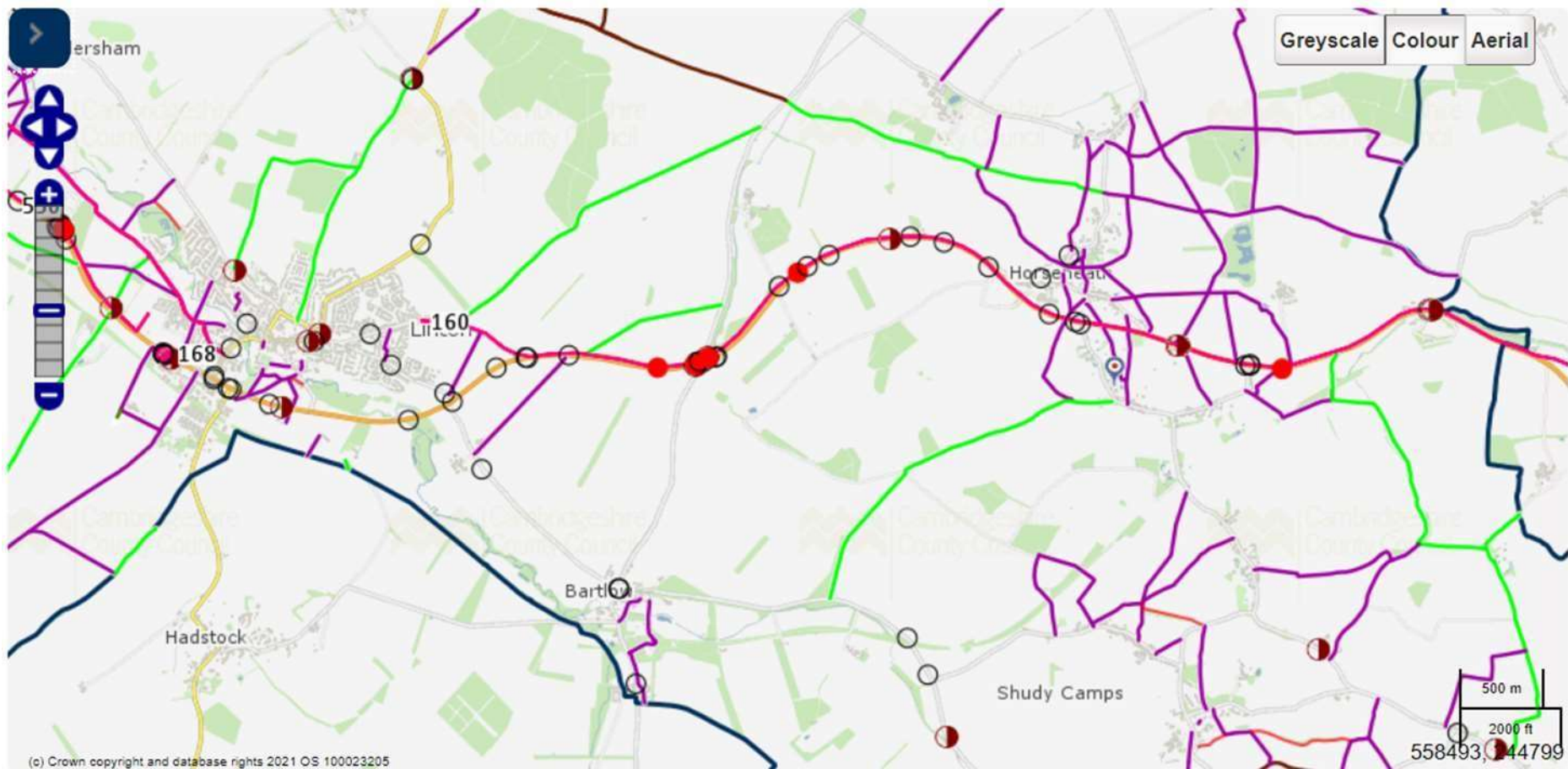


Diagram 1b – Cambridgeshire Accidents, footpaths and permissive paths and the recommended cycling/walking corridor. Red dots are fatalities, semi-shaded dots serious accidents and circles “minor” accidents (accessed 30th January 2021).

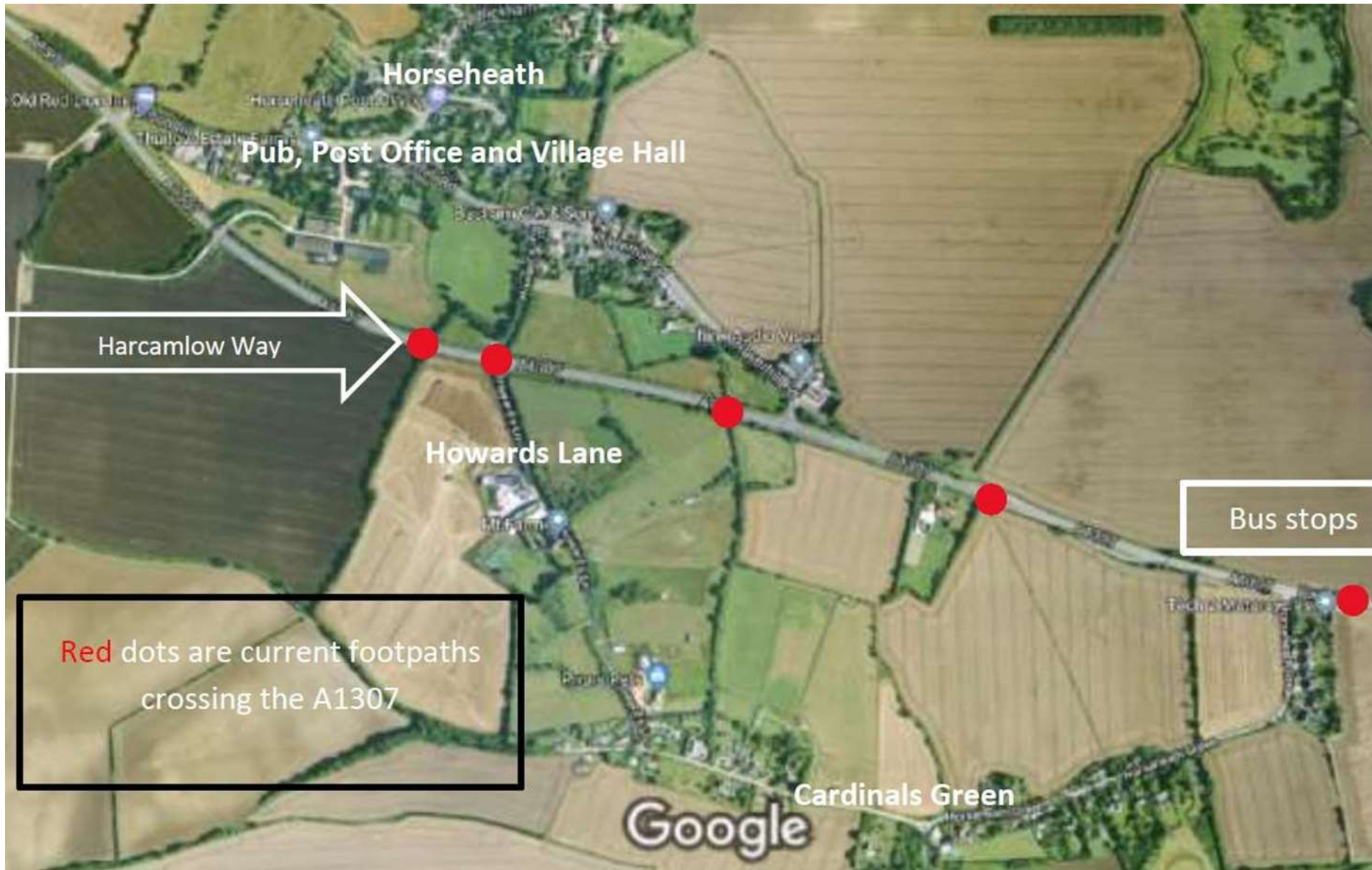


Diagram 2 – Horseheath and Cardinals Green

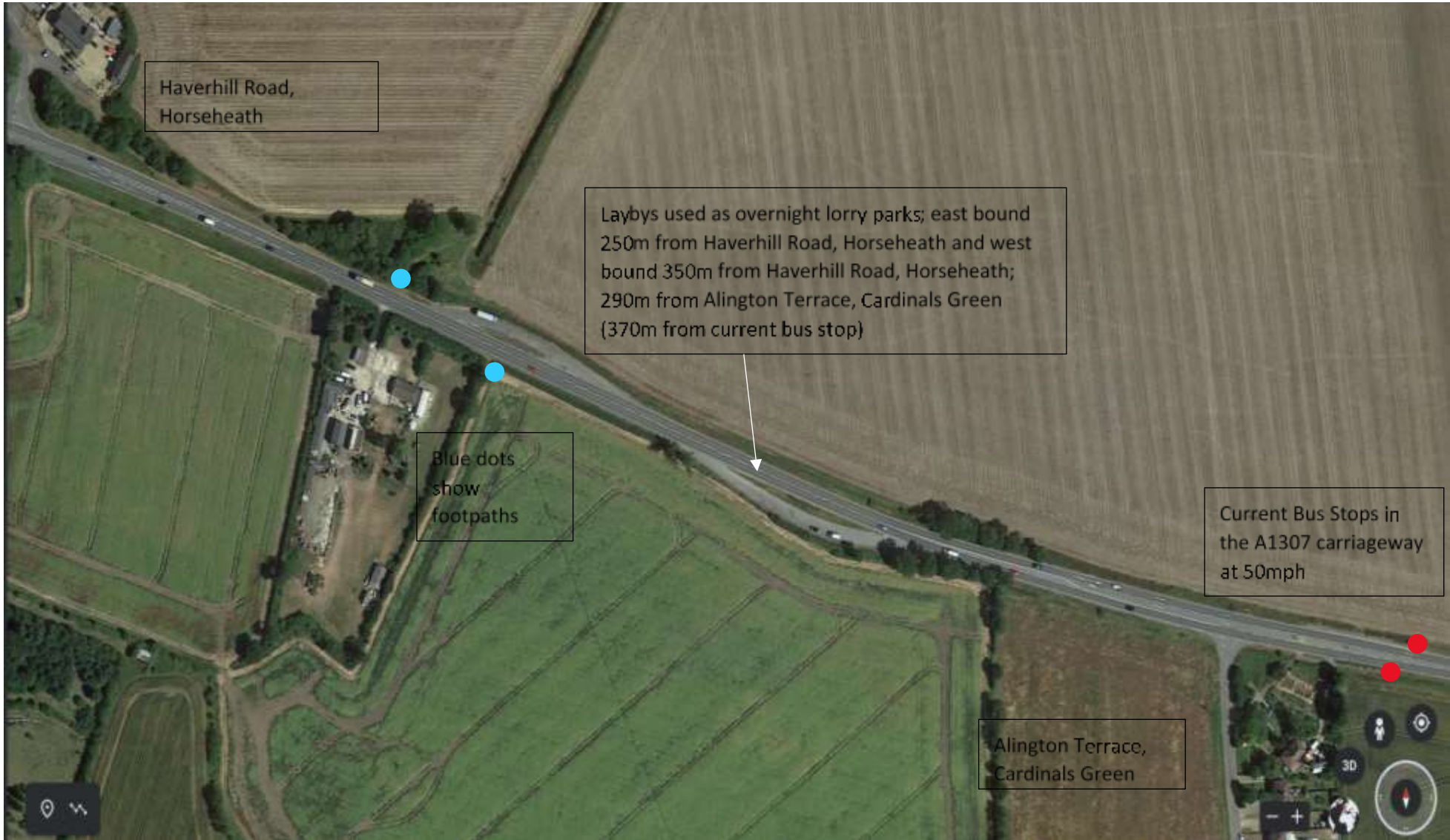


Diagram 3 – Expanded view of bus stops and laybys along the A1307 in Horseheath

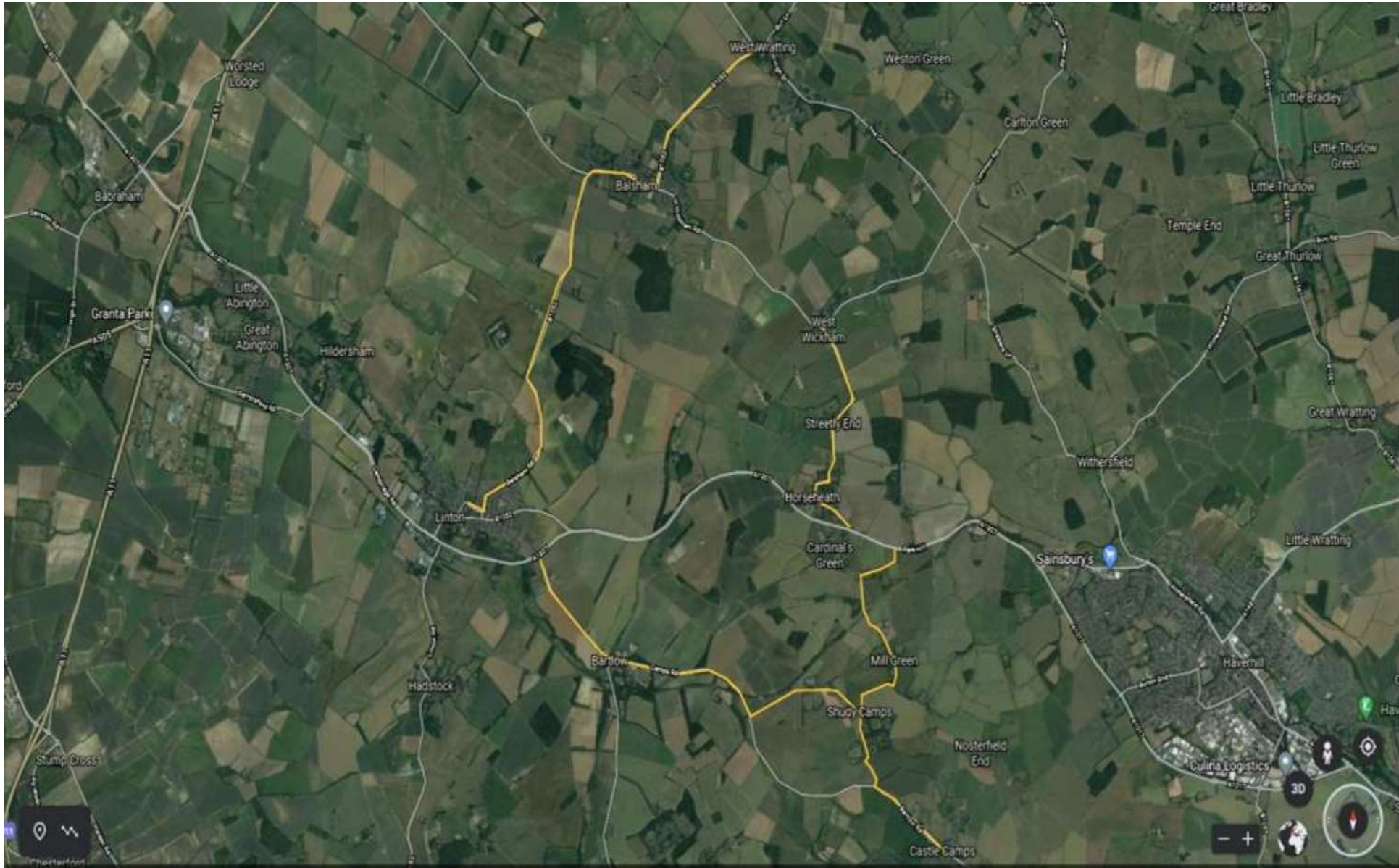


Diagram 4 – Possible Quiet Routes to facilitate NMT access to services

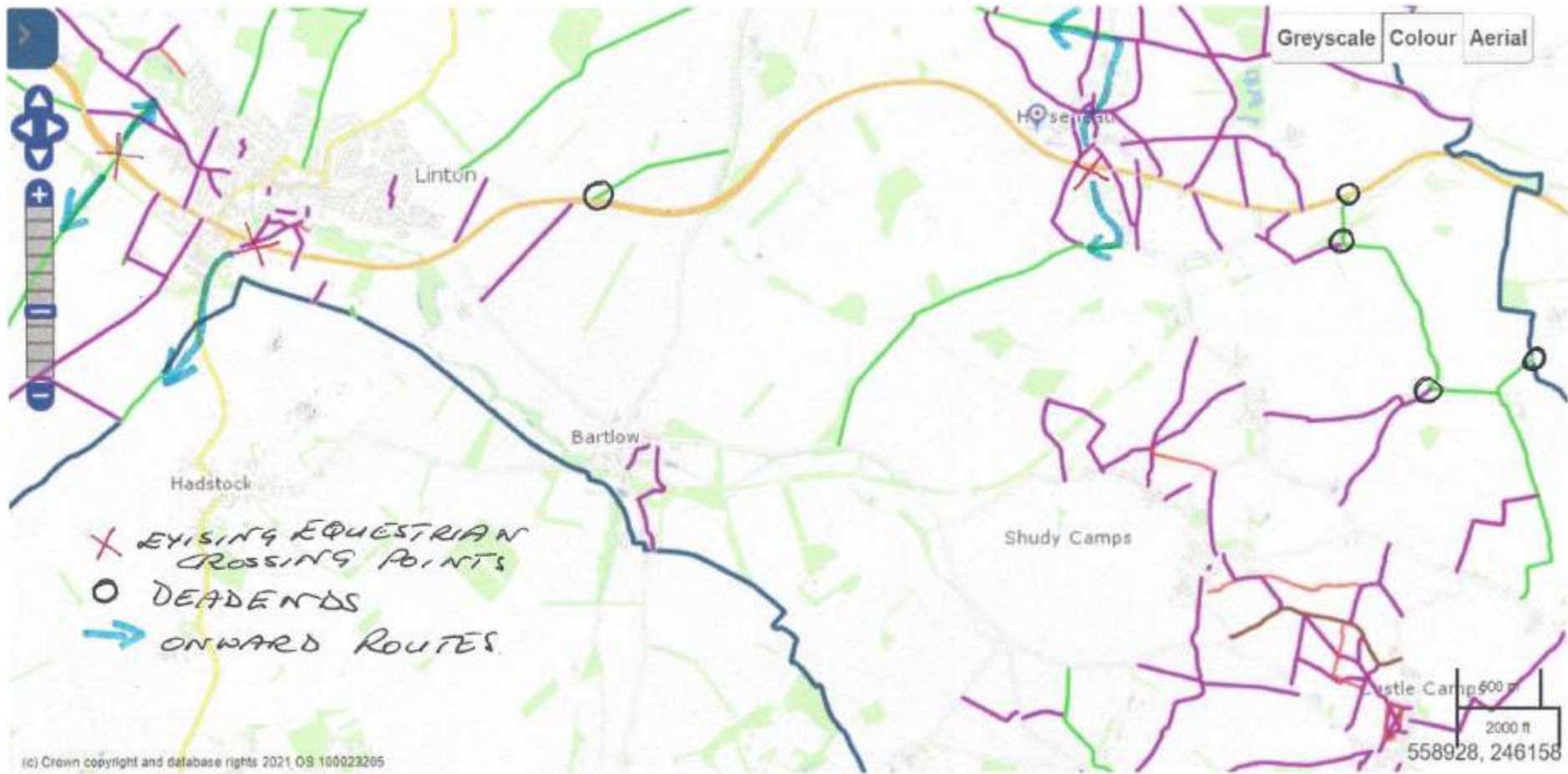


Diagram 5a – Current footpaths (violet) and bridleways (green), crossing points and dead ends



POTENTIAL OF F ROAD NETWORK IMPROVEMENTS.

Diagram 5b – Potential off-road network improvement east of Linton